

Ink conversion procedure:

Mutoh Valuejet

Models 1204, 1304, 1604, 1608, 1614 & 2606

Converting from Mutoh Eco-Solvent Ultra Ink to Lyson 2100 Series Inkset





Rev 2.0, May 2007

THIS DOCUMENT MAY NOT IN WHOLE OR IN PART BE COPIED, STORED ELECTRONICALLY OR COMMUNICATED TO A THIRD PARTY WITHOUT WRITTEN AGREEMENT OF NAZDAR.

Nazdar reserves the right to make changes, without notice, to the specifications and materials herein and shall not be responsible for any damages (including consequential) caused by reliance on the materials presented, including but not limited to typographical, arithmetic or listing errors.

Please address any questions, comments and suggestions to your nearest Nazdar Technical service department.

USA

Nazdar

8501 Hedge Lane Terrace

Shawnee, KS 66227 U.S.A.

Ph: +1 913 422 1888

Fax: +1 913 422 2296

www.nazdar.com

E-mail: custserv@nazdar.com

Europe, Middle East and Asia

Nazdar Ltd

Barton Road,

Heaton Mersey,

Stockport,

Cheshire

SK4 3EG

United Kingdom

Ph: +44 161 442 2111

Fax: +44 161 442 2611

www.nazdar.com

E-mail: technicalserviceuk@nazdar.com



IMPORTANT INFORMATION TO READ BEFORE PROCEEDING WITH YOUR INSTALL

The following conversion procedure is designed to convert over the following Mutoh Valuejet printers; 1204, 1304, 1604, 1608*, 1614 and 2606 to Lyson 2100 series inkset. Available in 6 colours; Cyan, Yellow, Magenta, Black, Light Cyan and Light Magenta in 440ml and 220ml cartridges, Specifically formulated to be a fully compatible colour match, thereby alleviating the need to flush the printer or generate new profiles.

*(1608-If running with the 'option' of Eco Ultra Inks)

To Ensure Safe Use

Failure to proceed with the correct method may cause damage to your printer. Nazdar cannot be held Responsible, due to lack of care during this procedure. If you require any further information on what method you need to perform, please contact your nearest Nazdar technical service department for further information or instruction. The list of your nearest Nazdar technical team can be found on page 2 of the conversion procedure.

Pictorial Signs

Pictorial Signs are used as a visual reference throughout the industry to quickly inform of a certain safe practise that is needed to be carried out or to warn of pending danger.



For your own safety wear safety glasses



This symbol indicates a prohibited behaviour, refrain from doing



This symbol gives you a caution, advising of possible error or harm



For your own safety wear safety gloves

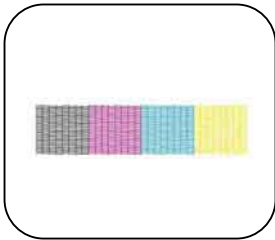


- When handling ink containers, be careful that ink does not get in your eyes or on your skin. However, if this happens, flush immediately with water. Otherwise, your eyes may become congested or inflamed slightly. If you feel discomfort, consult a doctor immediately.
- Do not disassemble ink containers. Otherwise, ink may get in your eyes or on your skin.
- Only use Nazdar/Lyson Solvent ink and appropriate cleaning liquid. Using other solvent inks will cause permanent damage to the printer.
- Please refer to the Material Data Safety Sheet for further handling instructions. A copy of the document can be requested from your Nazdar Distributor or from our website.

Requirements

- Full set of Lyson 2100 Series Inkset cartridges 220ml or 440ml
 - I. Valuejet 1204, 1304, 1604, 1608* and 1614 -Cyan, Magenta, Yellow and Black available in either 220ml or 440ml cartridges. *(1608 if running with the 'option' of Eco Ultra Inks)
 - II. Valuejet 2606 - Cyan, Magenta, Yellow, Black, Light Cyan and Light Magenta in 440ml cartridges as standard.

Step 1



Before commencing with the ink conversion it is essential you obtain a good nozzle check (procedure for performing nozzle check is in appendix 1.) No warranty dispute, regarding the conversion can be supported or defended if a pre nozzle check is not supplied. If several nozzles are permanently missing even after several cleans, you can proceed providing a disclaimer is signed, stating the condition of the nozzle check before conversion. A copy of the disclaimer is located in appendix 2 of this conversion procedure.



Empty the waste bottle before commencing. This is usually located on the underside of the printer. Dispose of the ink safely, as guided in your Mutoh user manual
(Consult your user manual if you are unsure of the waste tank)

Step 2

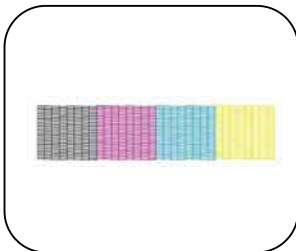


Next, remove each OEM cartridge one by one replacing with the Nazdar 2100 series inkset, taking care that the colour removed is replaced with the identical colour from the Nazdar inkset whether this be 4 colours (Model 1204, 1304, 1604, 1608* and 1614) or 6 colour(Model 2606).

Next, perform 3 Little Ink Charges. This will replace the OEM ink currently within the ink lines with the newly installed Lyson 2100 inkset. Allow 3 minutes rest before performing another final Little Ink Charge.

(Detail of this full procedure are located in appendix 1)

Step 3



You need to perform a nozzle check pattern and compare it against the nozzle check performed with the OEM inks before the ink change procedure began. If there are nozzles missing which were present before the ink change perform a 'powerful' clean (the method to perform a clean is located in the appendix 1). Again repeat the nozzle check pattern. Repeat until nozzles are restored. If you fail to restore all the nozzles consult your nearest Nazdar Technical support team as shown on page 2 for further instruction and guidance.



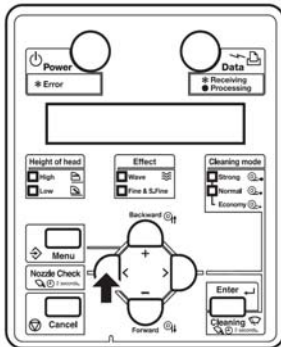
Please refrain from removing the cartridges from the printer before they are empty. As with the OEM, removing and replacing the cartridges repeatedly may allow ink to leak into the printer.



Even though, you have converted over your ValueJet printer to Lyson 2100 series inkset you must still carry out the general maintenance procedure as documented in your Mutoh user manual. Failure to do so may cause irreparable damage to your printer.

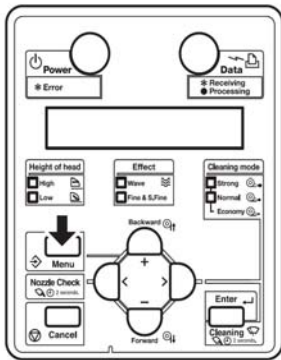
Appendix 1)

- **Performing a Test Print**



Press and hold the [**<**] key on the operation panel for two seconds or more. The printer will now perform a nozzle test.

- **Performing a Clean/Little Ink Charge Function**



Press the [Menu] key, and press the [-] key to scroll down to *Menu4: Cleaning*, press the [>] to enter the cleaning sub menu: here you can scroll though *Economy, Normal, Strong cleans* and *Little Ink Charge*. When you find the function you require press the *Enter* key. To return to the main menu once completed press the *Cancel* key.

Also, holding down the [*Enter/Cleaning*] key for more than two second starts head cleaning automatically.

Preventative Maintenance Measures

Please refer to Mutoh Valuejet Users Manual periodical Maintenance section, this can also be found in the operation manual too.



Appendix 2)

Disclaimer

Date:
Customer:
Contact:
Address:

Phone Number:
Fax Number:

Technician:
Printer/Equipment:
Serial No:
Manufacture Date:

Problem:

Parts Agreed to Check/Handle:

Parts that are Defective Explain:

Customer Acknowledgement:

This acknowledgement is only an estimate of the printer/equipment problem. There could be additional problems that exist, and is recommended that the printer manufacturer is first consulted on existing problems.

I acknowledge the receipt and services that Nazdar Technician, _____, will provide. If a part is damaged during Nazdar Technician handling during on-site visit, Nazdar assumes full responsibility of payment and part replacement. If a part discontinues proper operation following Nazdar Technician handling during an on-site visit, Nazdar will not accept responsibility of payment or part replacement, unless it is proven that nazdar or a Nazdar product is responsible for the discontinued operation.

I have received a copy, read, understand, and agree to terms and conditions listed on this Technician Service Handling Agreement.

Customer Signature, Date

Nazdar Technician Signature, Date